

# JPD-900A / Blood Pressure Monitor (Arm type)

## System Function

JUMPER Arm Blood Pressure Monitor is intended for use by medical professionals or at home to monitor and display diastolic, systolic blood pressure and pulse rate on adult each time, with an air cuff buckled around one's arm according to the instruction in the user's guide manual.

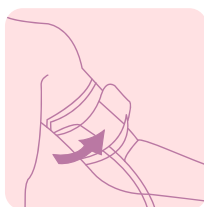


## Use Method

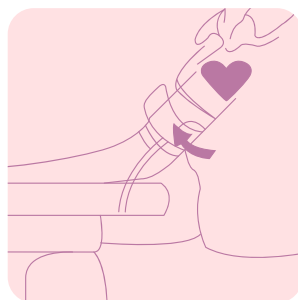
Arm cuff connecting should make arm feel no much tension. Don't connect too tense (otherwise the measurement will be not precise).  
Keep up right position on the same height of heart.



Step-1



Step-2



Make sure that your posture is correct  
Level the blood pressure monitor to your heart.